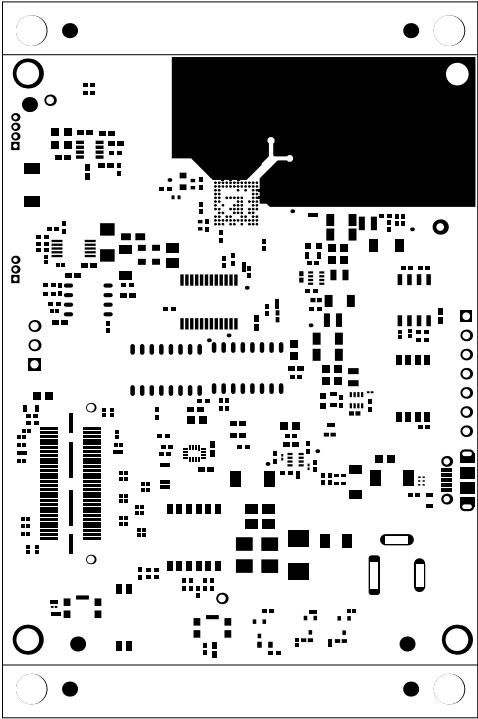
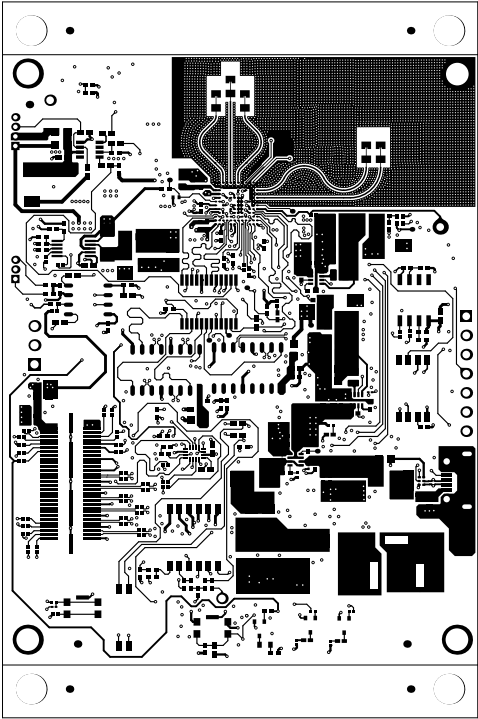


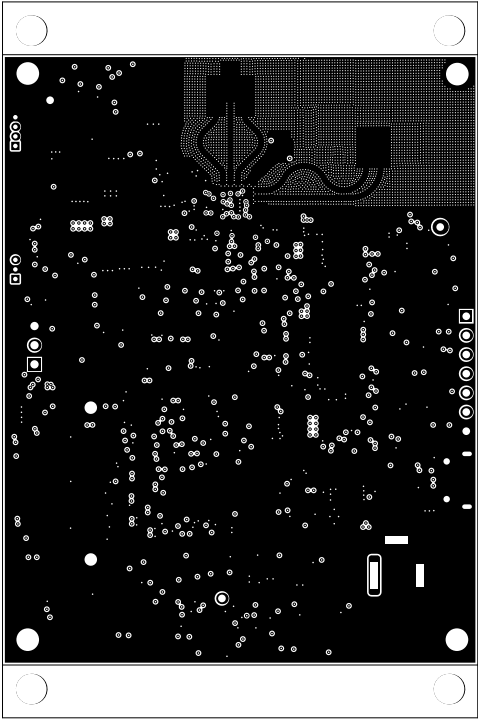
ALL ARTWORK VIEWED FROM TOP SIDE	BOARD #: PROC140B	REV: B	SUN REV: 1061 [No modification]
LAYER NAME = Top Overlay	TID #: N/A		
PLOT NAME = Top Overlay	GENERATED : 27-03-2023 12:31:22		TEXAS INSTRUMENTS



ALL ARTWORK VIEWED FROM TOP SIDE	BOARD #: PROC140B	REV: B	SUN REV: 1061 [No modification]
LAYER NAME = Top Solder	TID #: N/A		
PLOT NAME = Top Solder Mask	GENERATED : 27-03-2023 12:31:22		TEXAS INSTRUMENTS

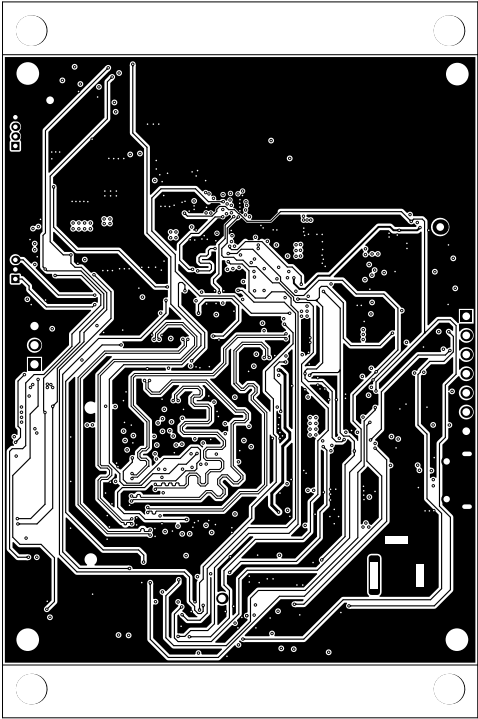


ALL ARTWORK VIEWED FROM TOP SIDE	BOARD #: PROC140B	REV: B	SUN REV: 1061 [No modification]
LAYER NAME = Top Layer	TID #: N/A		
PLOT NAME = Top Layer	GENERATED : 27-03-2023 12:31:22		TEXAS INSTRUMENTS

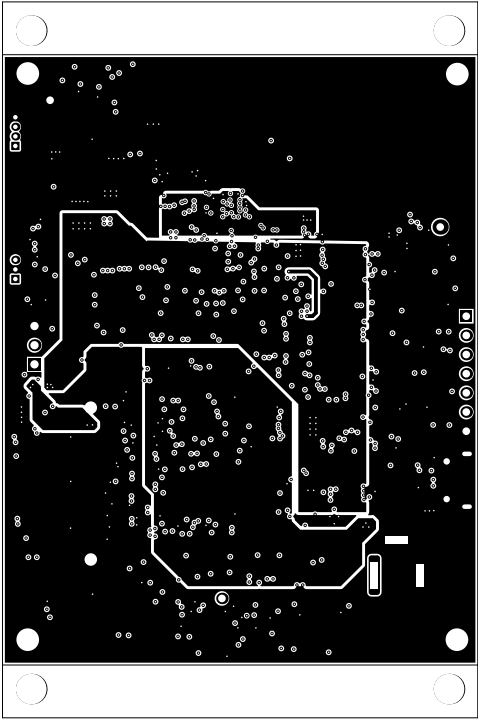


ALL ARTWORK VIEWED FROM TOP SIDE	BOARD #: PROC140B	REV: B	SUN REV: 1061 [No modification]
LAYER NAME = L2_GND1	TID #: N/A		
PLOT NAME = Signal Layer 1	GENERATED : 27-03-2023 12:31:23		TEXAS INSTRUMENTS

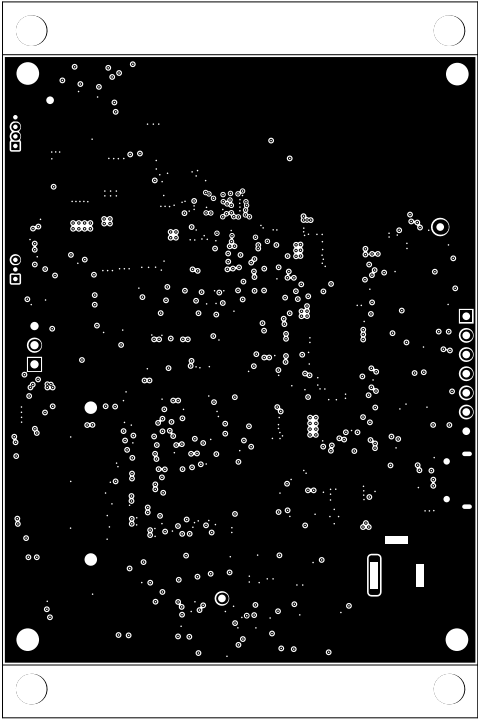




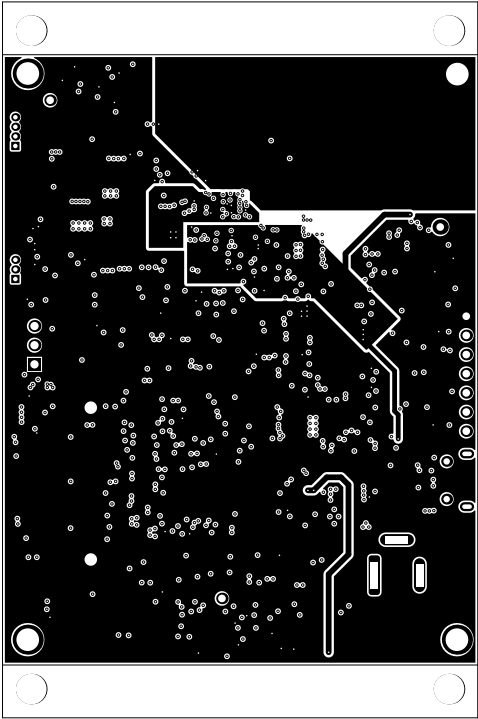
ALL ARTWORK VIEWED FROM TOP SIDE	BOARD #: PROC140B	REV: B	SUN REV: 1061 [No modification]
LAYER NAME = L3_SIG1	TID #: N/A		
PLOT NAME = Signal Layer 2	GENERATED : 27-03-2023 12:31:23		TEXAS INSTRUMENTS



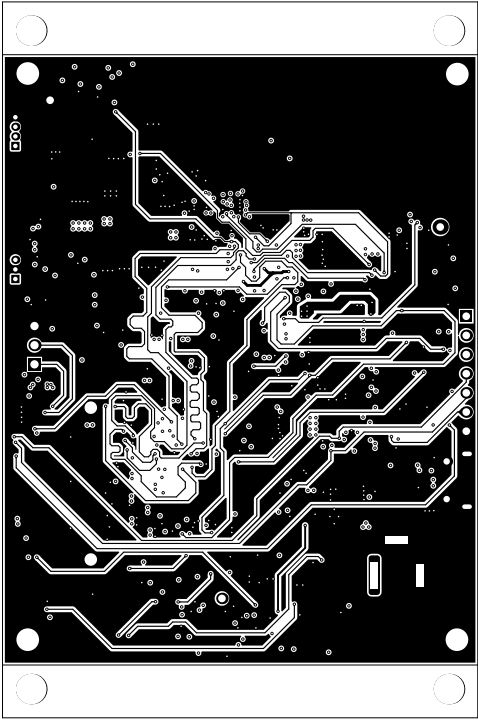
ALL ARTWORK VIEWED FROM TOP SIDE	BOARD #: PROC140B	REV: B	SUN REV: 1061 [No modification]
LAYER NAME = L5_PWR2	TID #: N/A		
PLOT NAME = Signal Layer 3	GENERATED : 27-03-2023 12:31:23		TEXAS INSTRUMENTS



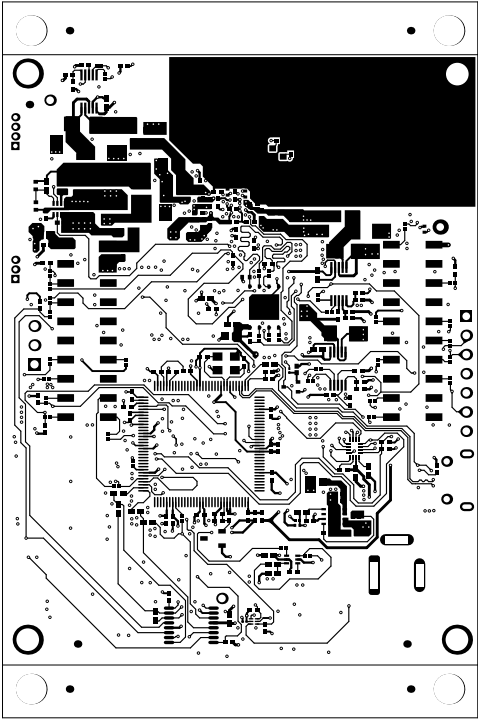
ALL ARTWORK VIEWED FROM TOP SIDE	BOARD #: PROC140B	REV: B	SUN REV: 1061 [No modification]
LAYER NAME = L7_GND2	TID #: N/A		
PLOT NAME = Signal Layer 4	GENERATED : 27-03-2023 12:31:23		TEXAS INSTRUMENTS



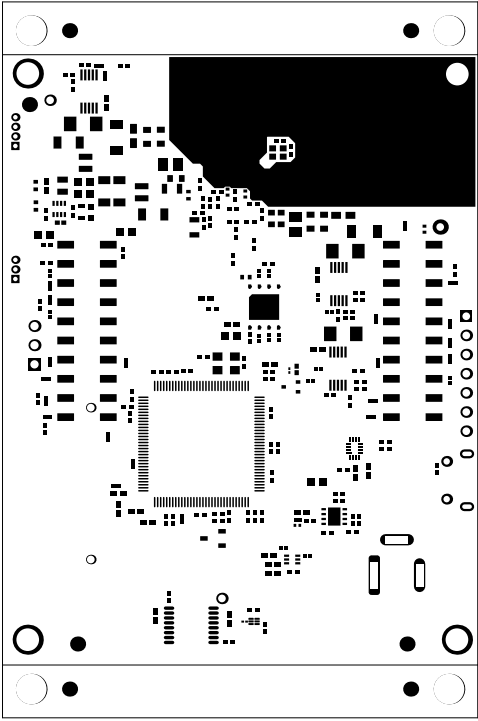
ALL ARTWORK VIEWED FROM TOP SIDE	BOARD #: PROC140B	REV: B	SUN REV: 1061 [No modification]
LAYER NAME = L4_PWR1	TID #: N/A		
PLOT NAME = Signal Layer 5	GENERATED : 27-03-2023 12:31:23		TEXAS INSTRUMENTS



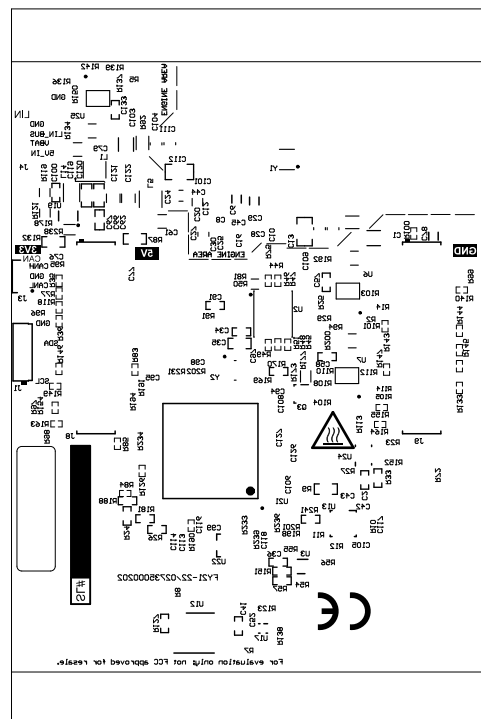
ALL ARTWORK VIEWED FROM TOP SIDE	BOARD #: PROC140B	REV: B	SUN REV: 1061 [No modification]
LAYER NAME = L6_SIG2	TID #: N/A		
PLOT NAME = Signal Layer 6	GENERATED : 27-03-2023 12:31:23		TEXAS INSTRUMENTS



ALL ARTWORK VIEWED FROM TOP SIDE	BOARD #: PROC140B	REV: B	SUN REV: 1061 [No modification]
LAYER NAME = Bottom Layer	TID #: N/A		
PLOT NAME = Bottom Layer	GENERATED : 27-03-2023 12:31:23		TEXAS INSTRUMENTS



ALL ARTWORK VIEWED FROM TOP SIDE	BOARD #: PROC140B	REV: B	SUN REV: 1061 [No modification]
LAYER NAME = Bottom Solder	TID #: N/A		
PLOT NAME = Bottom Solder Mask	GENERATED : 27-03-2023 12:31:23		TEXAS INSTRUMENTS

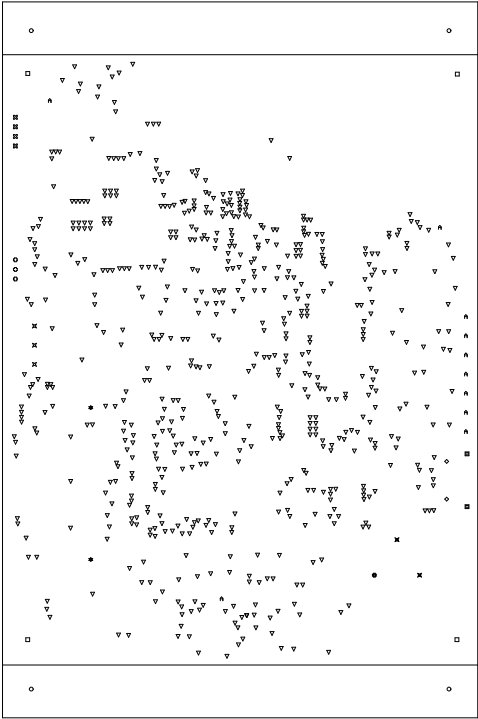


ALL ARTWORK VIEWED FROM TOP SIDE	BOARD #: PROC140B	REV: B	SUN REV: 1061 [No modification]
LAYER NAME = Bottom Overlay	TID #: N/A		
PLOT NAME = Bottom Overlay	GENERATED : 27-03-2023 12:31:23		TEXAS INSTRUMENTS



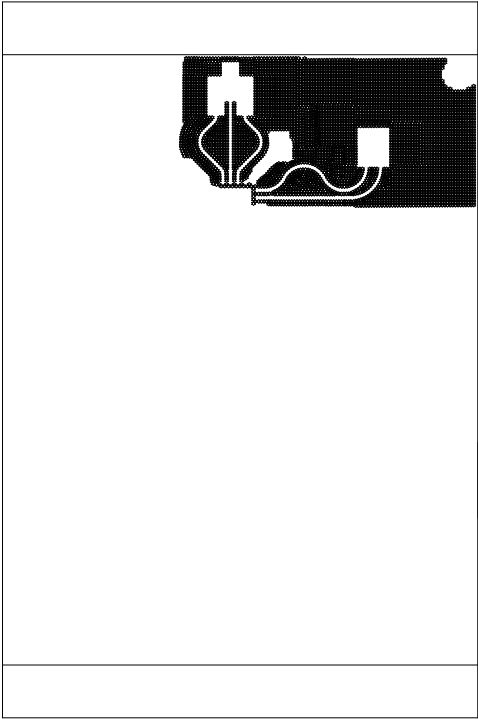
Symbol	Count	Hole Size	Plated	Hole Tolerance (+)	Hole Tolerance (-)	Hole Length
⊗	1	39.37mil (1.000mm)	PTH	3.94mil (0.100mm)	3.94mil (0.100mm)	137.79mil (3.500mm)
⊞	2	23.62mil (0.600mm)	PTH	3.00mil (0.076mm)	3.00mil (0.076mm)	51.18mil (1.300mm)
◇	2	33.47mil (0.850mm)	PTH	3.00mil (0.076mm)	3.00mil (0.076mm)	-
✕	2	39.37mil (1.000mm)	PTH	3.94mil (0.100mm)	3.94mil (0.100mm)	118.11mil (3.000mm)
✱	2	40.16mil (1.020mm)	NPTH	2.00mil (0.051mm)	2.00mil (0.051mm)	-
⊗	3	23.62mil (0.600mm)	PTH	3.00mil (0.076mm)	3.00mil (0.076mm)	-
✕	3	43.31mil (1.100mm)	PTH	3.00mil (0.076mm)	3.00mil (0.076mm)	-
⊞	4	23.62mil (0.600mm)	PTH			-
□	4	118.11mil (3.000mm)	PTH	3.00mil (0.076mm)	3.00mil (0.076mm)	-
○	4	160.00mil (4.064mm)	NPTH	2.00mil (0.051mm)	2.00mil (0.051mm)	-
A	10	40.00mil (1.016mm)	PTH	3.00mil (0.076mm)	3.00mil (0.076mm)	-
▽	625	8.00mil (0.203mm)	PTH	3.00mil (0.076mm)	3.00mil (0.076mm)	-
	662 Total					

Slot definitions : Routed Path Length = Calculated from tool start centre position to tool end centre position.  
Hole Length = Routed Path Length + Tool Size = Slot length as defined in the PCB layout

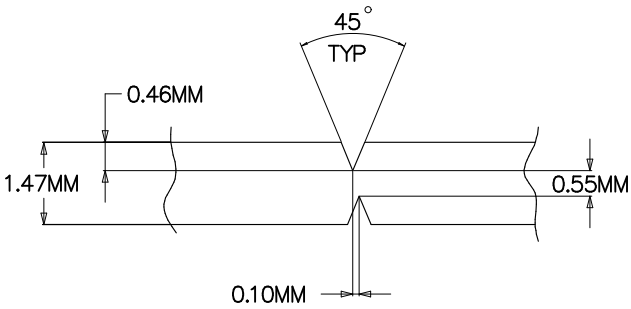
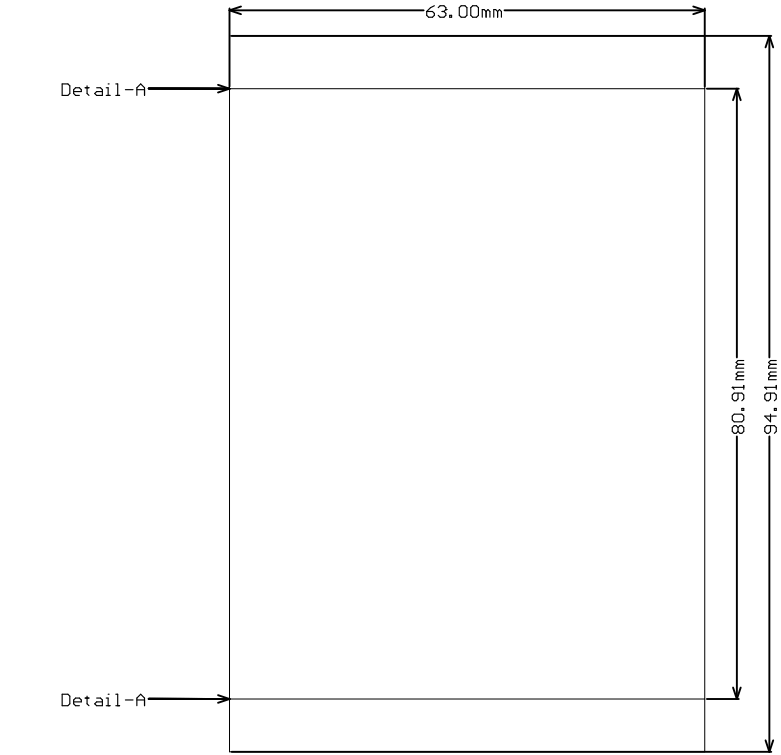


ALL ARTWORK VIEWED FROM TOP SIDE	BOARD #: PROC140B	REV: B	SUN REV: 1061 [No modification]
LAYER NAME = Drill Drawing	TID #: N/A		
PLOT NAME = Drill Drawing	GENERATED : 27-03-2023 12:31:24		TEXAS INSTRUMENTS

Symbol	Count	Hole Size	Plated	Drill Layer Pair	Hole Tolerance (+)	Hole Tolerance (-)
☆	4838	5.90mil (0.150mm)	PTH	Top Layer - L2_GND1	3.00mil (0.076mm)	3.00mil (0.076mm)
	4838 Total					



ALL ARTWORK VIEWED FROM TOP SIDE	BOARD #: PROC140B	REV: B	SUN REV: 1061 [No modification]
LAYER NAME = <sup>PL Board Outline</sup> Drill Drawing	TID #: N/A		
PLOT NAME = Drill Drawing	GENERATED : 27-03-2023 12:31:25		TEXAS INSTRUMENTS



DETAIL-A(V. SCORE DETAILS)  
SCALE:NTS

ALL ARTWORK VIEWED FROM TOP SIDE	BOARD #: PROC140B	REV: B	SUN REV: 1061 [No modification]
LAYER NAME = M2 Board Dimensions	TID #: N/A		
PLOT NAME = Board Dimensions	GENERATED : 27-03-2023 12:31:39		TEXAS INSTRUMENTS